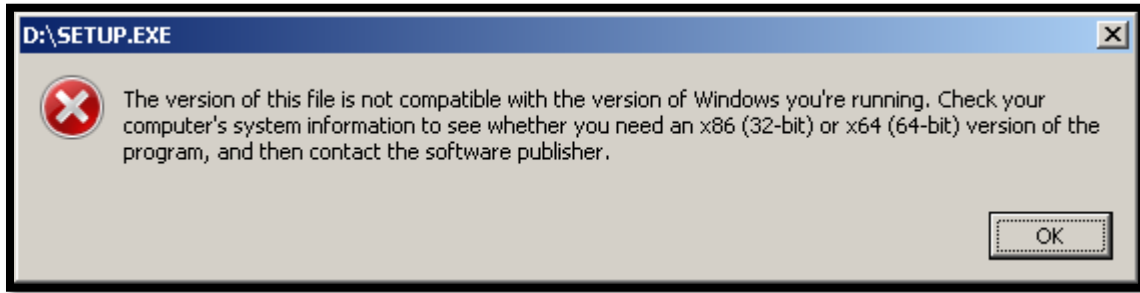


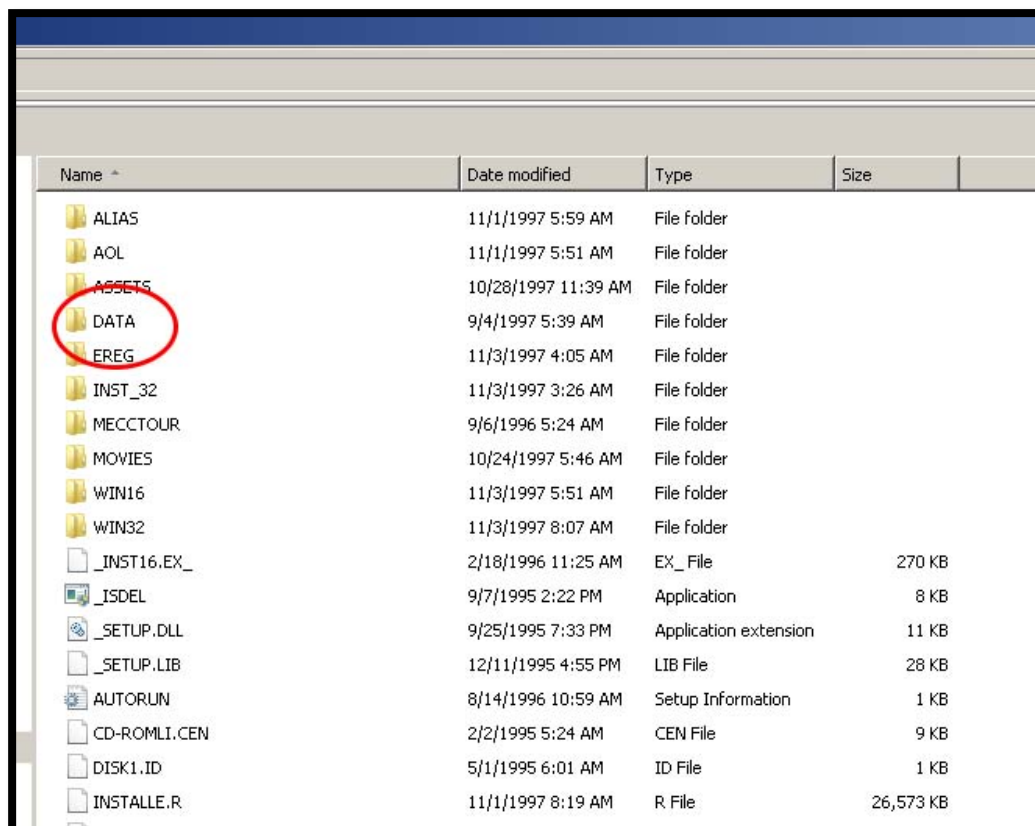
## Running Oregon Trail II on Windows 7 or Windows 8

If you are attempting to run Oregon Trail II on a newer version of Windows like Windows 7 or Windows 8, you may receive the following message when you try to install the software on your computer.

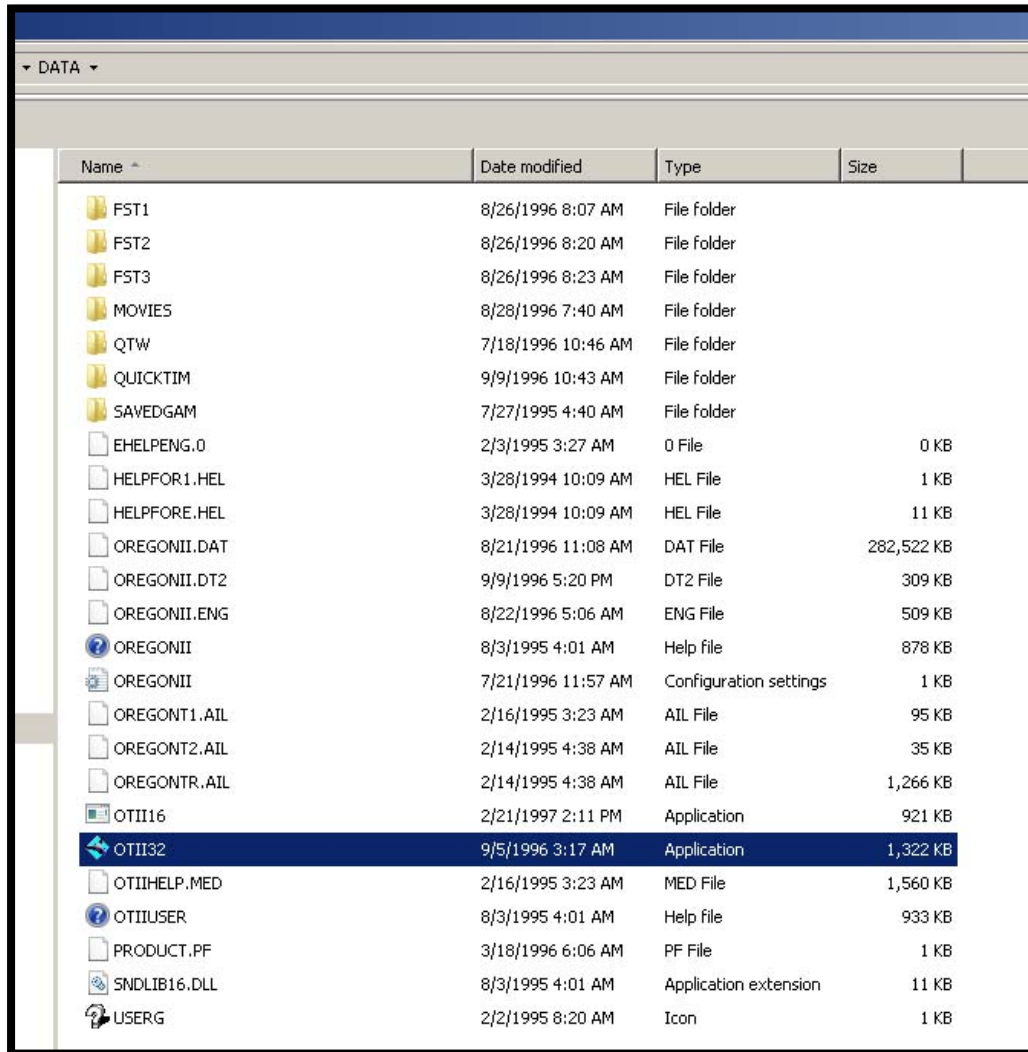


Even though you won't be able to run the installation program, it is still possible to run the game on a newer 64-bit version of Windows. Just follow these directions.

- 1) Place the DVD in the drive for your computer.
- 2) Open Windows Explorer
  - a. This can be done by clicking the start button and typing "Windows Explorer" or by typing "Windows Explorer" in the search box.
- 3) Navigate to the CD or DVD drive.
- 4) Open the Data folder by double clicking on it.



- 5) Run the program by double clicking the OTI32 application file. Sometimes it will make your screen look black. Just click the black screen and the program will appear.



- 6) You will open the game each time by double clicking this file. The first time you will need to select "New Game." After you are finished playing each day, save your changes to a known location like your desktop. The next time you play, you will select "Load Game" to load the file that you saved.

